

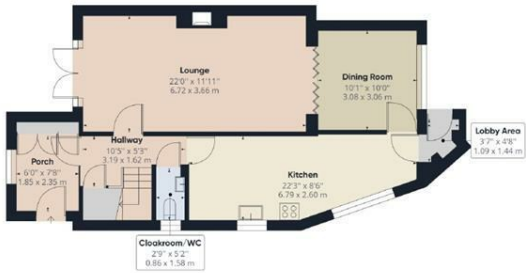


## 61 The Shades, Strood, Kent, ME2 2UB

CALL TO BOOK YOUR VIEWING \*\*5 BEDROOMS. GARAGE. DRIVE. CORNER PLOT. DECEPTIVE IN SIZE. VIRTUAL TOUR AVAILABLE\*\*. MMS are proud to present for sale this 5 bedroom semi detached house on a corner plot, located in a highly sought after area of Strood. Upon entering you are greeted with a good size porch and ample storage leading onto the entrance hall with access to the large lounge that boasts French doors to the front garden, letting the outside in. There are double doors to the dining room, offering to separate the rooms if you wish. The good size modern two tone kitchen with a double aspect entrance is well equipped with two double ovens, integral microwave, 5 ring hob, extractor hood, dishwasher, wine cooler and tumble dryer. There is a lobby area to the rear with extra storage and access to the rear garden. As expected with a home this size there is a downstairs cloakroom/wc. On the first floor there is the family bathroom and 3 bedrooms. On the 2nd floor being the loft conversion there are 2 further bedrooms and an internal room which was going to be the shower room. Externally there are gardens to the front and rear. The front garden is obscured from the public eye with trees and is easy to maintain with a painted decked area, patio and artificial lawn. Your own drive and garage is accessed via the shared drive. This a perfect size family home and we would strongly recommend an internal viewing to appreciate the size of the accommodation on offer. Council Tax Band E

- 5 BEDROOMS
- CORNER PLOT
- GARAGE
- DRIVE VIA SHARED DRIVE
- FRONT AND REAR GARDEN
- ENTRANCE PORCH
- MODERN KITCHEN
- LOBBY AREA
- LARGE LOUNGE
- DINING ROOM

**£450,000**



Ground Floor Building 1



Floor 1 Building 1



Floor 2 Building 1

Approximate total area<sup>(1)</sup>

1437.87 ft<sup>2</sup>  
133.58 m<sup>2</sup>

Reduced headroom

25.62 ft<sup>2</sup>  
2.38 m<sup>2</sup>

(1) Excluding balconies and terraces

Reduced headroom  
(below 1.5m/4.92ft)

While every attempt has been made to ensure accuracy, all measurements are approximate, not to scale. This floor plan is for illustrative purposes only.

GIRAFFE360

